

ARCHITECTURAL SHOWCASE

CANCER CENTER

Stanley Beaman & Sears, Inc. ATLANTA, GA
Winship Cancer Research Institute ATLANTA, GA



Project category: New construction (completed September 2003)

Chief administrator: Jonathan W. Simons, MD, Director, (404) 778-5177

Firm: Stanley Beaman & Sears, Inc., (404) 524-2200

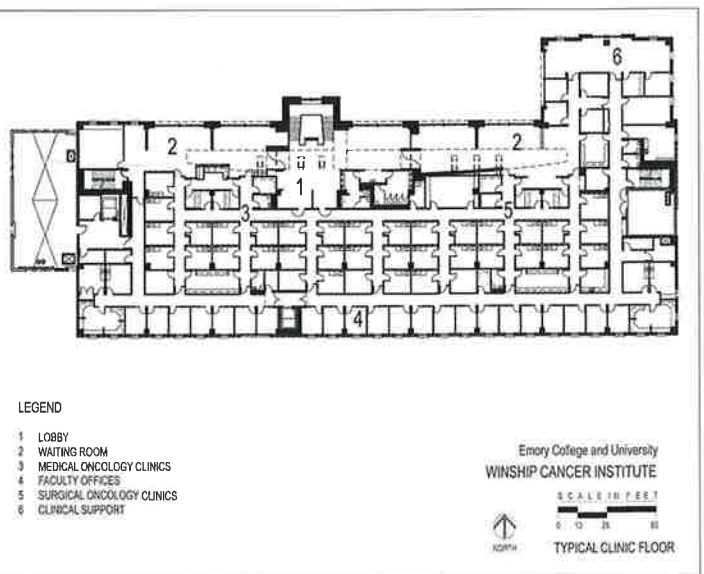
Design team: Architect of Record, Stanley Beaman & Sears, Inc.; Associate Architect, NBBJ; Structural Engineering Consultant, Stan D. Lindsey & Associates, Inc.; MEP Consultant, Newcomb & Boyd; Lab Planning Consultant, GPR Partners

Photography: Gary Knight + Associates, Inc.

Total building area (sq. ft.): 240,000

Construction cost/sq. ft.: \$247

Total cost (excluding land): \$59,300,000





Located on the campus of a larger hospital, research, and teaching institution, this new cancer research center includes both clinical departments and research laboratories with a flexible open plan. The project incorporates special features that highlight discovery within the research environment. Researchers' offices and a large auditorium and conference center are located in close proximity of one another on the lab floors to facilitate translational discourse between disciplines.

It is our belief that the most successful laboratories reflect both sides of science—meeting uncompromising technical standards while at the same time incorporating imaginative spaces that reflect the often-intuitive side of science. The Winship Cancer Research Institute carries on the multidisciplinary research tradition that was first established with the design of the Salk Institute.

